



अखिल भारतीय आयुर्विज्ञान संस्थान, नागपुर
ALL INDIA INSTITUTE OF MEDICAL SCIENCES, NAGPUR

Address: Plot No. 2, Sector-20, MIHAN, Nagpur- 441108

File No. AIIMS-NAG/PROC/Cent-Store/24-25/09/NIQ/05

Dt. 29/06/2024

NOTICE INVITING QUOTATIONS

The Executive Director, All India Institute of Medical Sciences, Nagpur invites quotations from the reputed supplier for Customized Charts for the departmental museum of Community Medicine of AIIMS Nagpur details are given below:

Sr. No	Item Description	QTY.	Unit Cost	Total Cost	GST %	Total Cost with GST
1	Customized Charts. Size:- 20"X 26", Laminated & Mounted Framed on Board. (Name of the charts and sample are attached)	25				


Note:

- A compiled statement of technical specification need to be submitted along with quotation.

TERMS OF CONDITIONS:

- 1) All quotations to be submitted in the name of **Executive Director, AIIMS Nagpur** only. Quotations not addressed to Executive Director, AIIMS, Nagpur will not be opened and rejected summarily.
- 2) Rates of articles should be quoted per unit item without including GST.
- 3) Taxes leviable should be quoted separately.
- 4) A declaration by vendor is required to be submitted along with quotation stating that vendor is not debarred by Department of Commerce or Ministry/ Department concerned.
- 5) Delivery Period: - Within 30 days from the date of supply order.
- 6) Delivery should be FOR O/o Central Store, AIIMS, Nagpur.
- 7) **Liquidated Damages charges:-** In the event of the Seller's failure supply, Liquidated Damages charges will be deducted to the sum of 0.5% of the contract price of the delayed/undelivered, stores/services mentioned above for every week of delay or part their of a week, subject to the maximum value of the Liquidated Damages being not higher that 10% of the value of delayed stores.
- 8) Payment will be released on inspection of supplied material found satisfactory by the concerned department as regard to quality, quantity etc. Broken articles will have to be replaced before payment.
- 9) Bank details such as Account Number, IFSC Code etc. should be furnished so as to facilitate payment on line, if any.
- 10) Interested parties should submit their quotations in **sealed envelope in store office, super scribing "QUOTATION FOR SUPPLY OF CUSTOMIZED CHARTS FOR THE DEPARTMENTAL MUSEUM OF COMMUNITY MEDICINE OF AIIMS NAGPUR WITH NUMBER OF NIQ"** on or before **13/07/2024 before 12.00 hrs.**
- 11) Rights to accept/reject any quotation rests with the AIIMS Nagpur.




Administrative Officer
AIIMS, Nagpur
Rohan L. Bagde
Administrative Officer
AIIMS, Nagpur

Sr.no	Charts Name
1	James Lind (1716-1794)
2	Edward Jenner (1749-1823)
3	Sir Edwin Chadwick (1800-1890)
4	John Snow (1813-1858)
5	Ignaz Semmelweis (1818-1865)
6	Louis Pasteur (1822-1895)
7	Heinrich Hermann Robert Koch (1843-1910)
8	Dilip Mahalanabis (1934-2022)
9	Sunithi Solomon (1939-2015)
10	Black Death (1346-1353)
11	Quarantine And Isolation
12	Spanish Influenza (1918-1920)
13	1925 Serum run to Nome
14	Web of Causation
15	Types of screening
16	Validity and Reliability
17	Measures of validity
18	Model for Early Disease Detection Programmes
19	HADDON MATRIX- RTA
20	Sustainable Developmental Goals (SDG)
21	Rule of Halves- Hypertension in Community
22	Tracking of blood pressure
23	NHM Infrastructure
24	Milestones in Public Health Evolution

25. Clinical Breast Examination



Pradeep Deshmukh, MD
 Professor & Head
 Department of Community Medicine
 AIIMS, Nagpur.

James Lind (1716-1794)



- Scottish Physician
- Pioneer of Naval Hygiene
- First Clinical Trial
- Citrus Fruits in curing scurvy
- Distillation of seawater into potable water

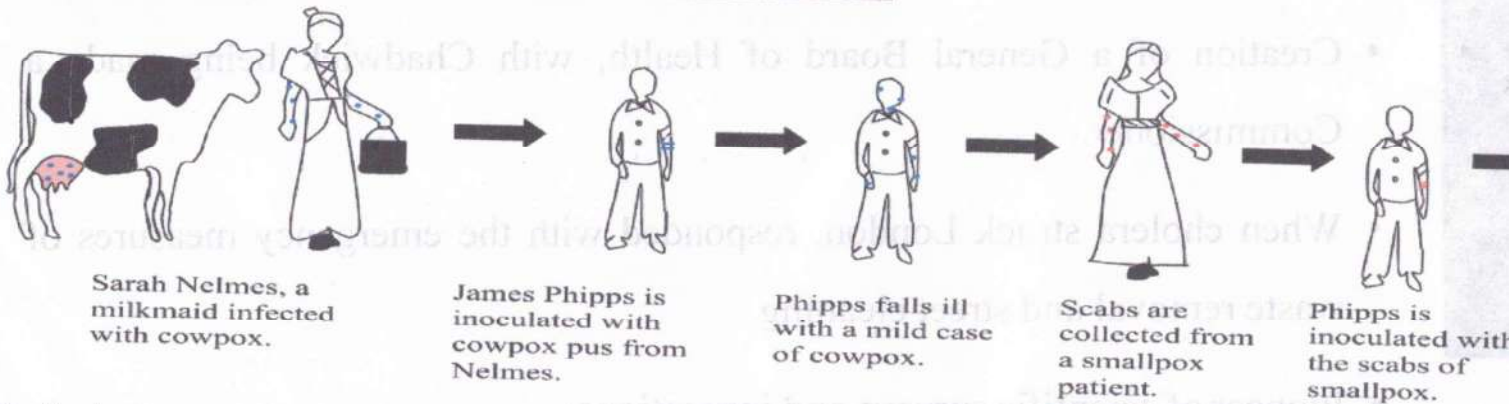
Milne I. Who was James Lind, and what exactly did he achieve?

Pradeep Deshmukh, MD
Professor & Head
Department of Community Medicine
AIIMS, Nagpur.

Edward Jenner (1749-1823)



- English Physician
- Father of Immunology
- Pioneer of Smallpox Vaccine
- 14th May, 1796 - 8 year old James Phipps was the first to receive vaccine.



Source-<https://bcmj.org/blog/thanksgiving-toast-dr-edward-jenner-vaccine-pioneer>

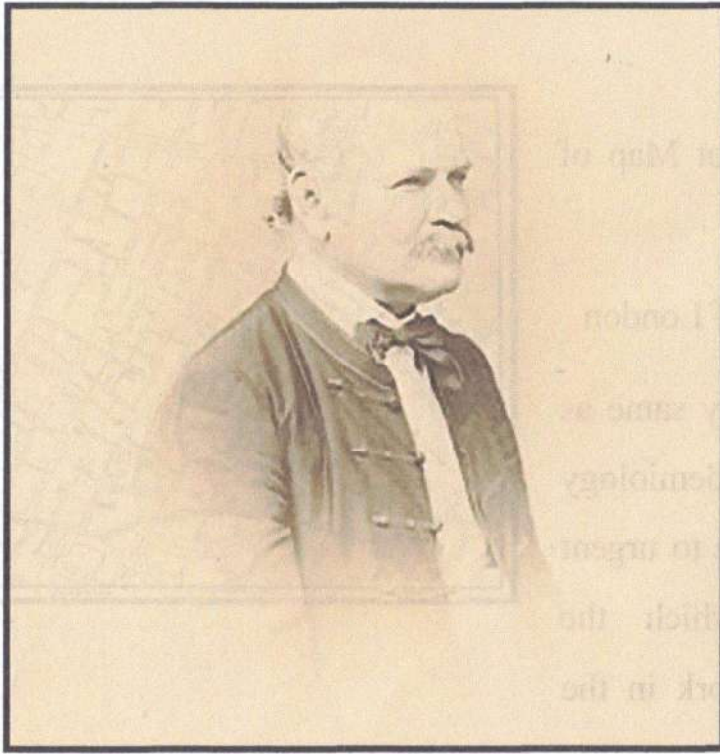
Sir Edwin Chadwick (1800-1890)



- English Social Reformer
- Established link between poor sanitation and outbreaks of cholera in urban environments
- Major reforms in urban sanitation and public health (1848).
- Creation of a General Board of Health, with Chadwick as its first Commissioner.
- When cholera struck London, responded with the implementation of waste removal and street cleaning
- Pioneer of scientific surveys and inspections

Source-<https://www.english-heritage.org.uk/visit/blue-plaques/edwin-chadwick/>

Ignaz Semmelweis (1818-1865)



- Hungarian Physician
- Semmelweis established a strong causal association between unclean hands and puerperal fever.
- He enforced a hand-washing policy
- Father of infection control and hygiene.
- Early pioneer of Antiseptic Process to reduce maternal mortality
- Handwashing techniques and chlor

Source- Ignac Semmelweis-Father of Hand Hygiene. Indian J Surg. 2020 Jun

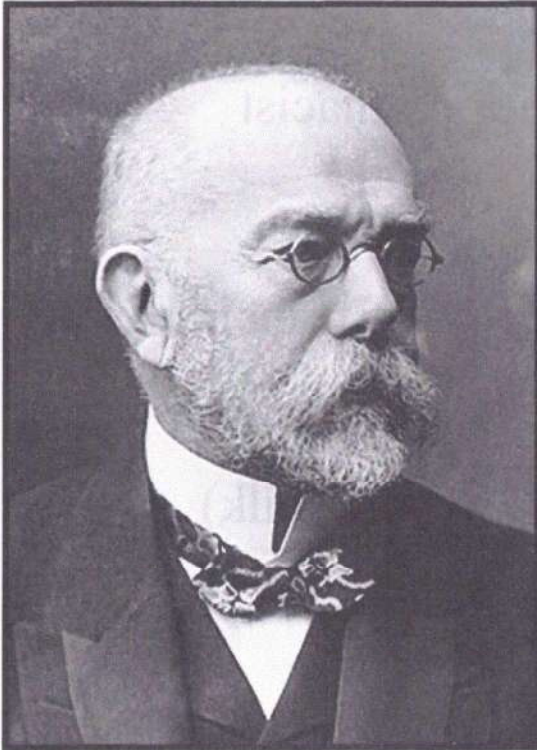
Louis Pasteur (1822-1895)



- French chemist, pharmacist, and microbiologist.
- Discovered the principles of vaccination, microbial fermentation, and Pasteurization (preservation of food and beverages).
- Father of Bacteriology
- Vaccines of Anthrax and Rabies

Source: Adam, P. (1951). ["Louis Pasteur: Father of bacteriology"](#). Canadian Journal of Medical Technology. 13 (3): 126-128. PMID 14870064.

Heinrich Hermann Robert Koch (1843-1931)



- German Microbiologist
- Discoverer of the specific causative agents of tuberculosis, cholera and anthrax
- Koch's Postulates
- Germ Theory of Disease
- Nobel Prize, in Physiology or Medicine, 1905

Tan, S. Y.; Berman, E. (2008). "[Robert Koch \(1843-1910\): father of microbiology and Nobel laureate](#)". Singapore Medical Journal. 49 (11): 854-855. PMID 19037

Pradeep Deshmukh, MD
Professor & Head
Department of Community Medicine
AIIMS, Nagpur.

Dilip Mahalanabis (1934-2022)



The mortality rate was 3.6 percent among those given ORT, compared with 30 percent in those given IV fluid therapy.

- Indian pediatrician
- Pioneer in using Oral Therapy to treat diarrhoea
- Role in Post-Bangladesh Independence (1971)
- Started Campaign with WHO policy to treat de

Pradeep Deshmukh, MD
Professor & Head
Department of Community Medicine
AIIMS, Nagpur.

Sunithi Solomon (1939-2015)



Key role in alerting India to the threat of the HIV/AIDS epidemic

- Indian Microbiologist
- Discovered the first case of HIV in India
- Established one of India's first voluntary HIV counseling and testing facilities, treating more than 20000 patients
- Educated other doctors that HIV was a fatal disease and could be treated

Black Death (1346-1353)



Paul Fürst, engraving (coloured), c. 1656, of a plague doctor of Marseilles (introduced as 'Dr Beaky of Rome'). His nose-case is filled with herbal material to ward off the plague.¹

- Bubonic Plague Pandemic
- 2nd Great Plague Pandemic
- One of the most fatal human history about 25 million people are estimated to have died from the plague between 1346 and 1351

Lawton, Graham (25 May 2022). [Wilson, Emily](#) (ed) [persists and could cause a pandemic](#)". [New Scientist](#)

Quarantine And Isolation

- **Quarantine** separates and restricts the movement of people who were exposed to a contagious disease to see if they become sick.
- **Isolation** separates sick people with a contagious disease from people who are not sick.



For people who are not sick, but may have been exposed, quarantine:



For people who are sick, isolation:

Dr. Pradeep Deshmukh, MD
Professor & Head
Department of Community Medicine
AIIMS, Nagpur.

Spanish Influenza (1918-1920)



Soldiers sick with Spanish flu at a hospital ward Camp Funston in Fort Riley, Kansas

<https://my.clevelandclinic.org/health/diseases/21777-spanish-flu>

- **Great Influenza epidemic** or influenza epidemic caused by the virus
- The microscopic killer circled the globe in months, claiming the lives of millions of people.
- Introduction of 'Social Distancing' and 'Masks'
- Early and sustained imposition of school closures, and other social-distancing measures significantly reduced mortality rates

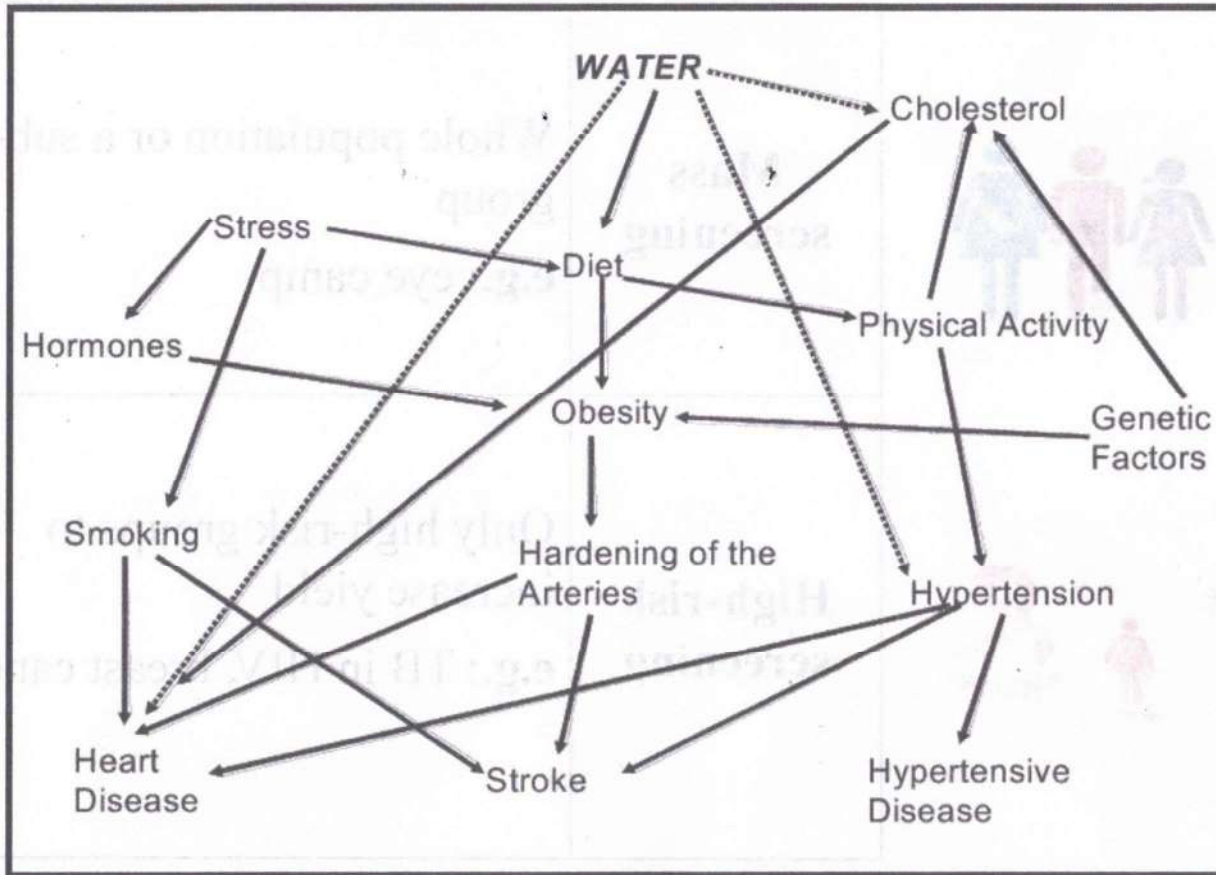
1925 Serum run to Nome

- The Serum Run (The Great Race of Mercy)
- Transport of Diphtheria antitoxin to town of Nome
- Dog-sled relay across the U.S Territory of Alaska
- 20 Musherers and about 150 sled dogs
- Across 1,085 km in 5.5 days



Leonhard Seppala with his dogs after the serum run in 1925. His lead dog, Togo, on the far left.

Web of Causation



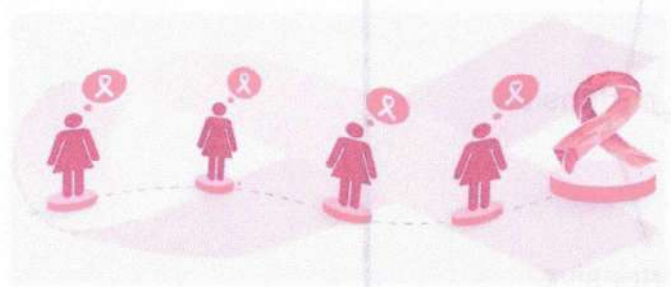
Calderon, R. & Hunter, Paul. (2009). Epidemiological studies and the association of cardiovascular disease risks with water hardness. *Calcium and Magnesium in Drinking-water*. 110.

Pradeep Deshmukh, MD
Professor & Head
Department of Community Medicine
AIIMS, Nagpur.

Types of screening



Mass screening	Whole population group e.g.: eye camp
-----------------------	--



High-risk screening	Only high-risk group increase yield e.g.: TB in HIV, br
----------------------------	---

Source: Park Textbook – 27th edition – Page - 153

Validity and Reliability



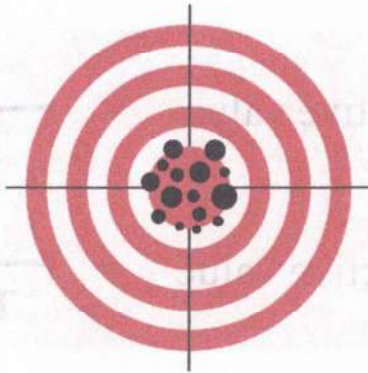
Unreliable & Not Valid



Unreliable, But Valid



Reliable, Not Valid



Both Reliable & Valid

RELIABILITY

Consistent results when
than once on the same in
same condition

VALIDITY

The extent to which the
measures what it was
measured

Measures of validity

DIAGNOSTIC TEST

RESULTS

	Diseased	Not diseased
SCREENING TEST RESULTS	Positive True Positive (TP)	False Positive (FP)
	False Negative (FN)	Negative True Negative (TN)

$$\text{Sensitivity} = \frac{\text{TP}}{\text{TP} + \text{FN}}$$

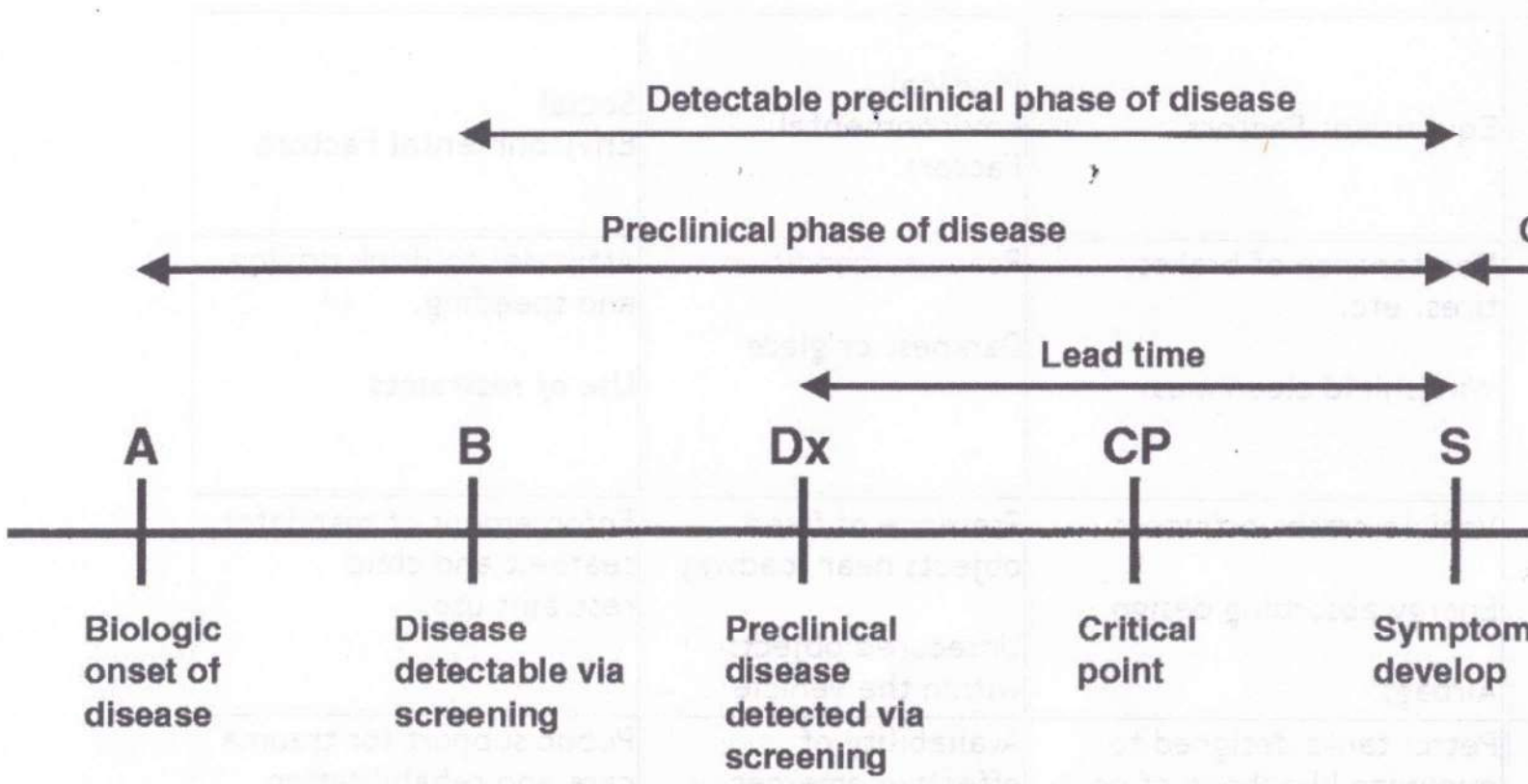
$$\text{Specificity} = \frac{\text{TN}}{\text{TN} + \text{FP}}$$

$$\text{Positive predictive value} = \frac{\text{TP}}{\text{TP} + \text{FP}}$$

$$\text{Negative predictive value} = \frac{\text{TN}}{\text{TN} + \text{FN}}$$

Pradeep Deshmukh, MD
Professor & Head
Department of Community Medicine
AIIMS, Nagpur.

Model for Early Disease Detection Pro



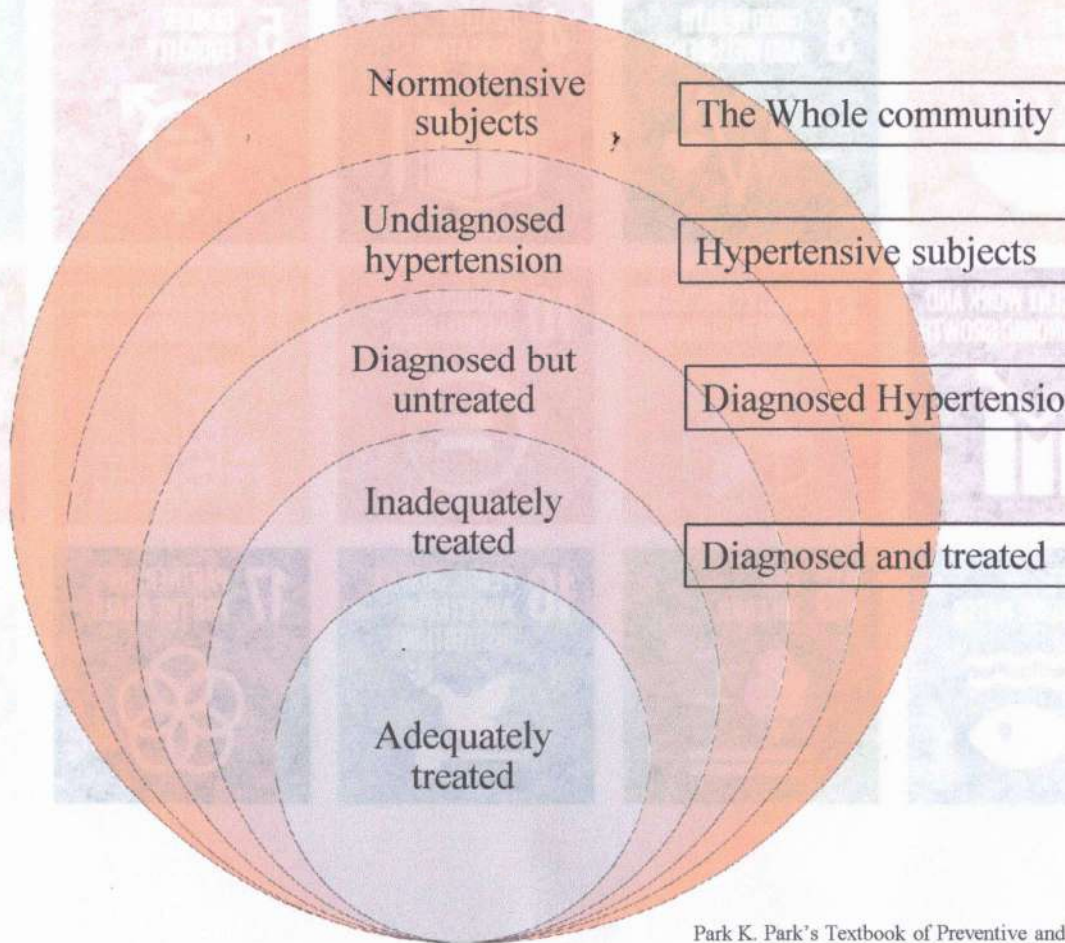
Source- Park Textbook – 27th edition page- 152

Department of Community Medicine
 Professor & Head
 Padeep Deshmukh, MD

HADDON MATRIX- RTA

Factors →	Personal Factors	Equipment Factors	Physical Environmental Factors	Social Environmental Factors
Phases ↓				
Pre-event	Driver skills Driver attentiveness Sobriety	Maintenance of brakes, tires, etc. Windshield cleanliness	Roadway condition Darkness or glare	Attitudes and speed Use of restraints
Event	Human tolerances to crash forces Wearing of seatbelts	Vehicle crashworthiness Energy absorbing design Airbags	Presence of fixed objects near roadway Unsecured objects within the vehicle	Enforcement of seatbelt restraints
Post-event	Crash victims general health status	Petrol tanks designed to minimize likelihood of post-crash fire	Availability of effective emergency response	Public safety care and services

Rule of Halves- Hypertension in Comm



Park K. Park's Textbook of Preventive and

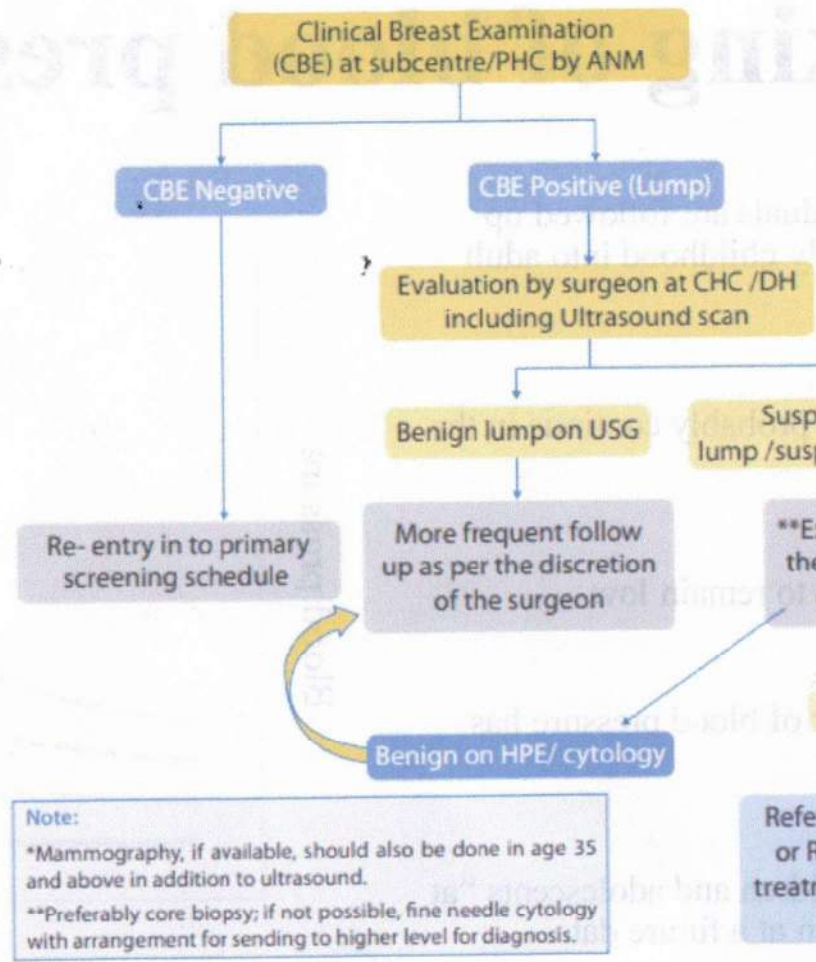
Pradeep Deshmukh
Pradeep Deshmukh, MD
Professor & Head
Department of Community Medicine
AIIMS, Nagpur.

Sustainable Developmental Goals (SDGs)



Source: <https://sdgs.un.org/goals>

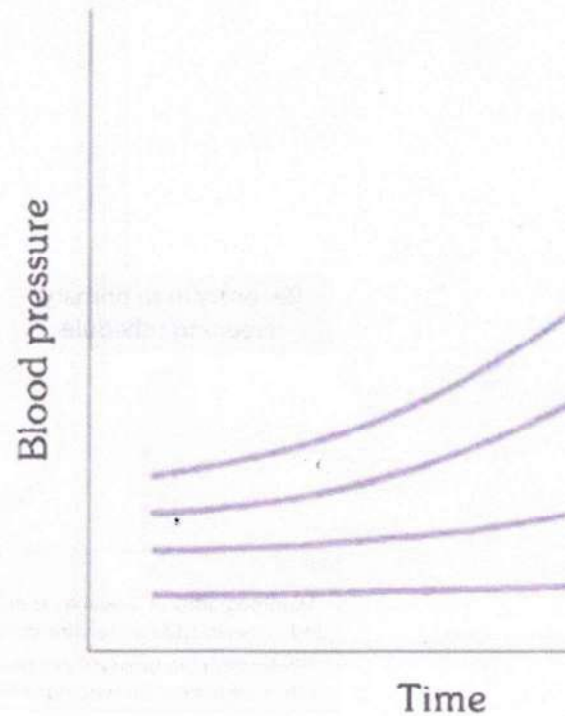
Pradeep Deshmukh
 Professor & GM
 Department of Surgery
 AllMS, Nagpur



Ministry of Health and Family Welfare, Government of India. Operational Framework: Management of Common Cancers.

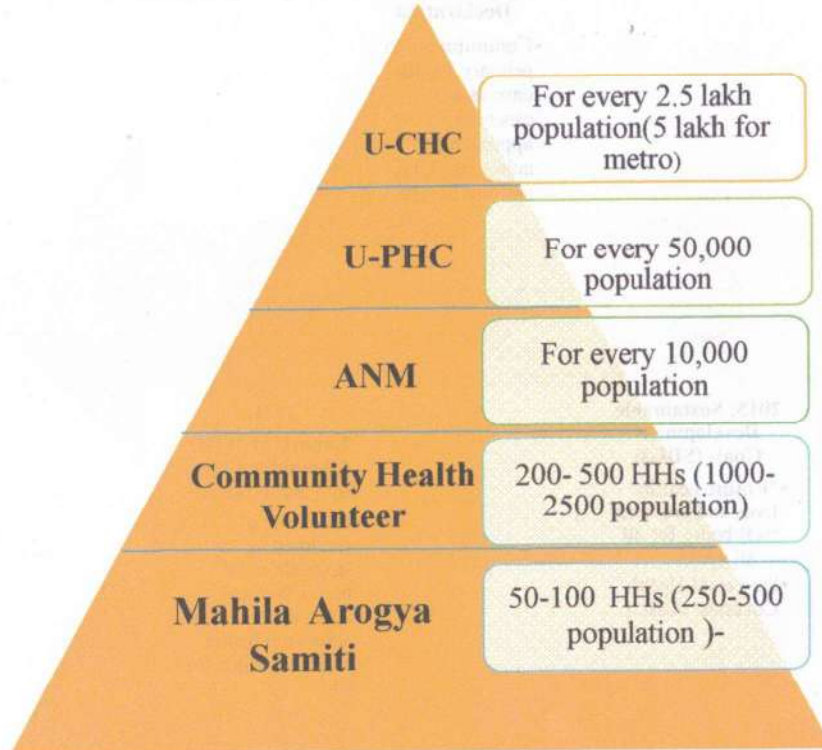
Tracking of blood pressure

- Blood pressure levels of individuals are followed up over a period of years from early childhood into adult life.
- Individuals with high pressure, probably continue in the same “track” as adults.
- Low blood pressure levels tend to remain low.
- This phenomenon of rank order of blood pressure has been described as “**tracking**”.
- It can be applied to identify children and adolescents “at risk” of developing hypertension at a future date.

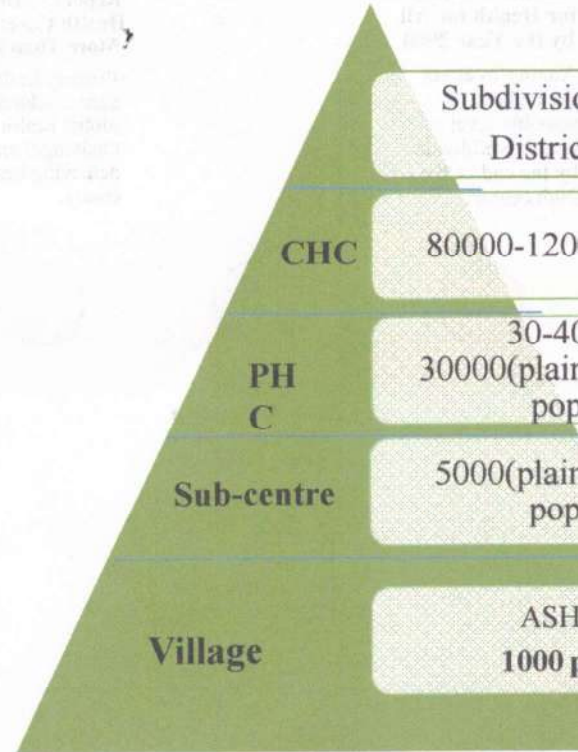


NHM Infrastructure

National Urban Health Mission



National Rural Health Mission





Milestones in Public Health Evolution

1948:

World Health Organization (WHO) Established
Promoting global health and well-being.

1980:

Launch of the Global Strategy for Health for All by the Year 2000

- Aiming to attain the highest possible level of health worldwide by the end of the 20th century.

2008:

World Health Report - Primary Health Care: Now More Than Ever

- Primary health care in addressing global health challenges and achieving health equity.

2018:

Astana Declaration

- Commitment to primary health care as an essential approach for achieving UHC and the SDGs.

1978:

Alma-Ata Declaration on Primary Health Care

- Importance of primary health care in achieving "Health for All" by the year 2000.

2000: **Millennium Development Goals (MDGs)**

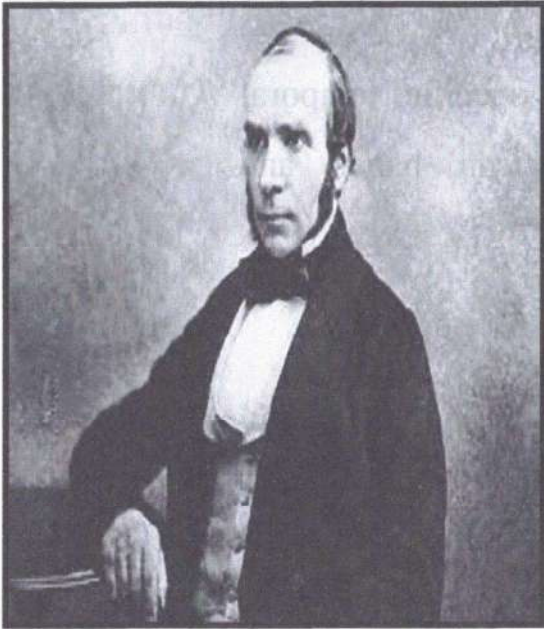
- Reducing child mortality and combating HIV/AIDS, malaria, and other diseases.

2015: **Sustainable Development Goals (SDGs)**

- "Ensure healthy lives and promote well-being for all at all ages."
- Universal Health Coverage (UHC)

John Snow (1813-1858)

- English Physician
- Father of Epidemiology
- Natural Experiment on Cholera and Spot Map of Cholera
- Changes in water and sanitation system of London
- Paved way for shoe-leather epidemiology same as field epidemiology or intervention epidemiology imply investigations initiated in response to urgent public health problems and for which the investigative team does much of its work in the field



Koo D, Thacker S
on shoe-leather a
American journal